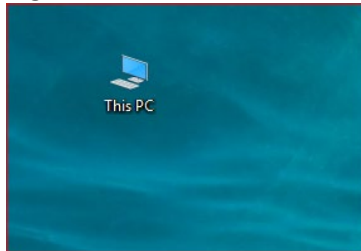
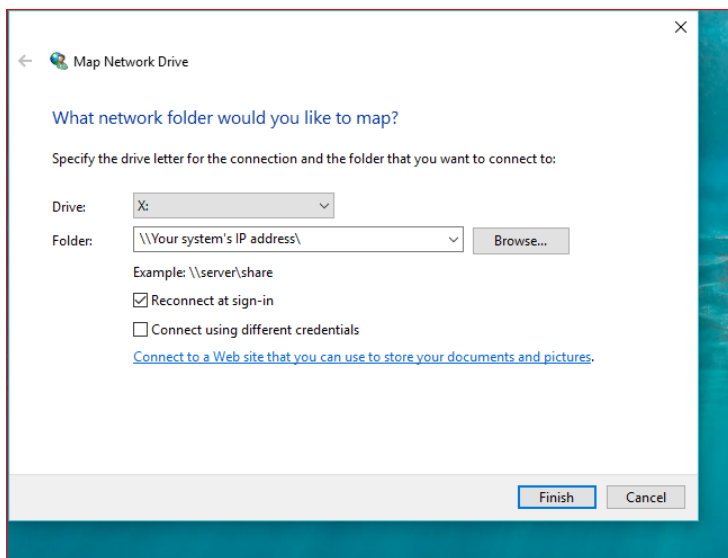
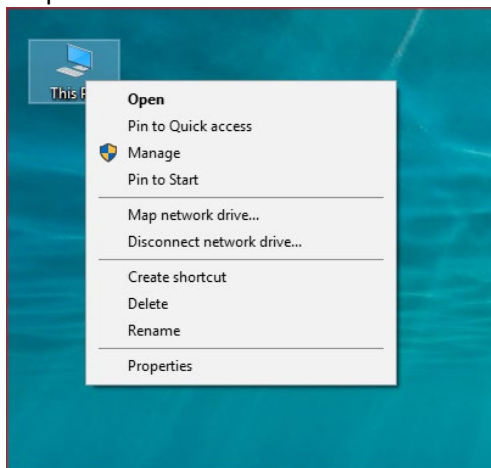


Windows 10 Mapping a network drive to Positive Pay or ACH

Right Click on THIS PC



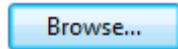
Map network drive....



When the Dialog screen displays.
Leave the default Drive Letter.
But in the Folder field type: (following the example below the field)

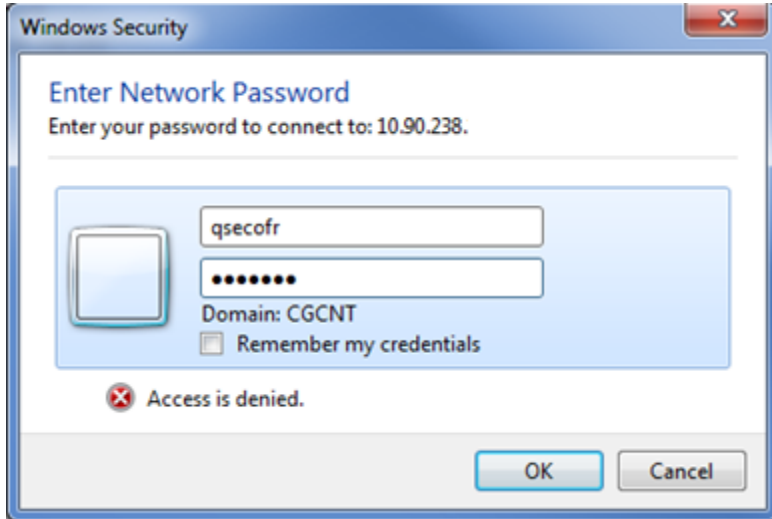
\\10.10.10.10\ where 10.10.10.10 is the I.P Address of your System-i – Make sure you are using your own system' IP address. The one on this example is not valid.

Click on the button labeled



You may be required to authenticate.

Use a Profile with enough authority to navigate throughout your Network, such as QSECOFR.

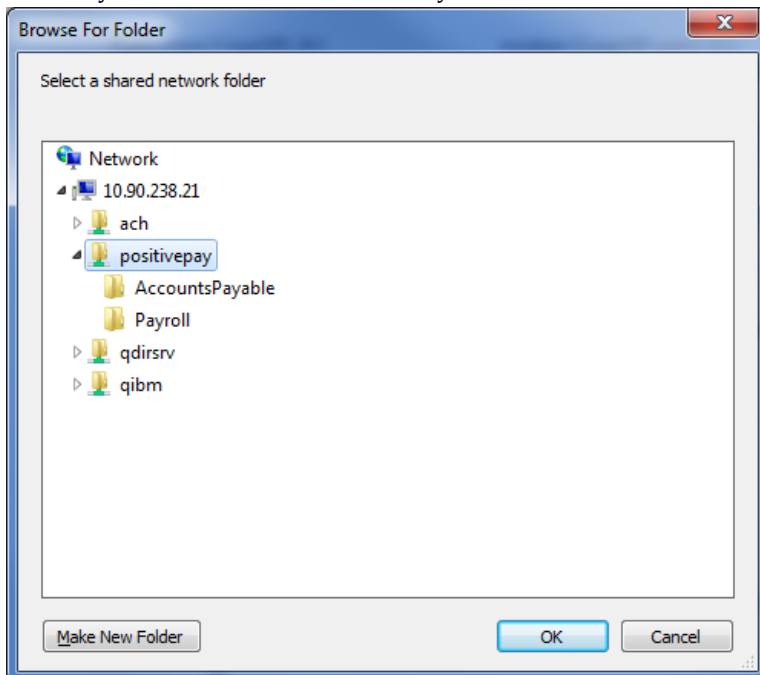


If your Profile has that authority, then use your own.

Click on the button labeled



Tree out your Network to Find Positive Pay or ACH and click on it as to select it.

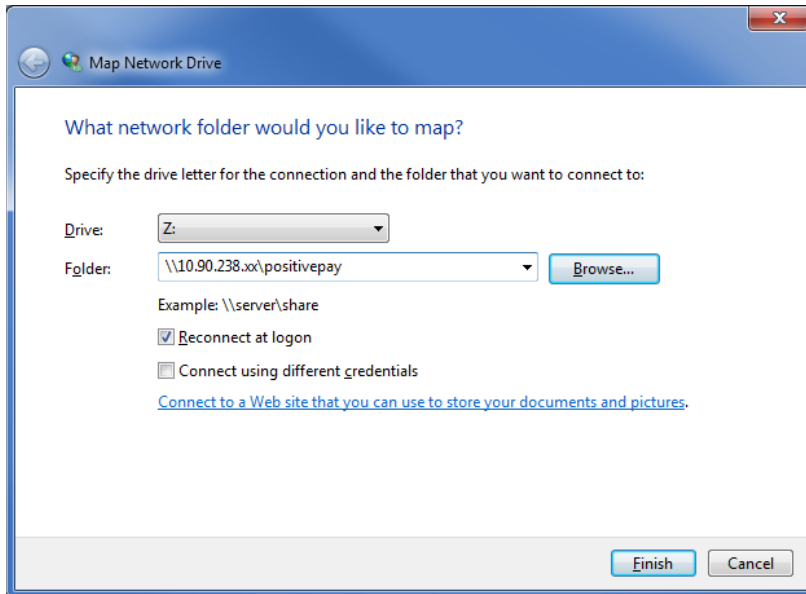


Once the button labeled



becomes available; click on it

The Mapped Drive will be complete



Click on the button labeled

Finish

Your Mapped Drive to Positive Pay will now be available.

If you chose ACH your selection will reflect your choice.

